

PLANT LIST

MILLING SECTION

Machining Centres

Pallet Size

1 off DMU 50 Full Simultaneous 5 axes machining

500 x 450mm



1 off DMU 80 Full Simultaneous 5 axes machining

900 x 630mm

1 off Matsuura RA-2G Vertical Twin Pallet Machining Centre
15,000 rpm Spindle, 30 Automatic Tool Changer

660 x 460mm

1 off Matsuura RA-IF Vertical Twin Pallet Machining Centre
15,000 rpm Spindle, 30 Automatic Tool Changer

536 x 400mm

1 off Matsuura 510-VG Vertical Machining centre 15,000 rpm Spindle
20 Automatic Tool Changer

510 x 360mm

1 off DMG ECO Microset Tool setter

Programming Hyper Mill, Hyper Cad.
*Acceptable file types: IGES, DXF, PARASOLID,
Solidedge, Solidworks, Catia 4& 5, Pro Engineer*



CNC

1 off Adcock & Shipley Bridgeport Interact Series 1 MK2

42" x 15"

1 off Adcock & Shipley Bridgeport Interact 4 Series 2

38" x 15"

2 off Adcock & Shipley Bridgeport Interact 2 Series 2

33" x 12"

Vertical

1 off XYZ SMX 4000 Proto Trak

1 off KRV 4000 Bed Mill

58" x 14"

2 off XYZ Pro 3000 + Proto trak AGE 2 NC System

58" x 12"

1 off XYZ PRO SLV Proto trak AGE 3 NC System

2 off SEMCO VM with Digital readout

42" x 9"



TURNING SECTION

CNC

Capacity

1 off DMU CTX 310 ISM CNC Universal Lathe Max. reach 580 mm/swing diameter 330 mm Servo turret with 12 driven tools and Y-axis for eccentric operations.



1 off Takisawa - TM20 Turning Centre with powered tooling and second operation spindle. 30 HP. Fanuc OTB Control 310mm dia x 630mm Long

1 off Haas SL-40 CNC Turning Centre, 381 mm chuck 648 x 1118 mm

2 off Takisawa - TS15 - 5000 rpm - 25HP
(1 off with Fanuc 3T Control) 7" dia. x 12'
(1 off with Fanuc 10T Control) Long barfeed
1 9/16" dia.

Centre Lathes

1 off XYZ Pro Turn VL Lathe 355 with Pro track AGE control 1000mm B/C
360mm S.O.B
225mm S.O.C/S
25-4000 rpm

1 off Harrison - M540 with digital readout 60" between
Centres 14 1/2"
Over cross slide

1 off Colchester Chipmaster with Hydraulic copy turning 5" dia. x 20" Long

Capstans

1 off Herbert 2 D
2 off Hardinge Turret Lathe

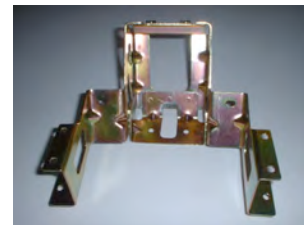
SHEET METAL SECTION

New for 2010!!

1 off Trumpf Trulaser Cell 7040 5 axis Laser Cutting Machine
X 4000mm, Y 1500mm, Z 750mm, C-axis n x 360 deg, B-axis +/- 135 deg,
4kW Capacity to cut 8mm Aluminium, 15mm steel, 6mm stainless steel
Cutting speed up to 40 m/min

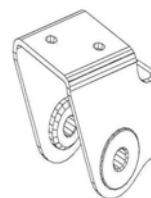


1 off PYE-ERFURT 250 ton Hydraulic Press 250 ton
Bed dimensions 900 x 630mm – (Bed Cushion Stroke 200mm x 100 tons)

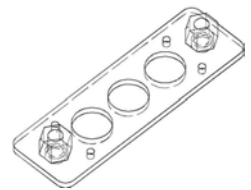


1 off Hans Schoen Hydraulic Press 4230 100 tonne.

1 off Wiedemann Vectrum 3000 Alpha Turret Punch Press 30 ton punching capacity



2 off Amada Promecan Press Brake Model APX5020 NC Control - 6 Axes	50 Tonne Bending Length 2 Metres
also Promcam Brake presses from 1.5m bed up to 3m bend length.	
1 off Guifil Hydraulic Up-Stroking Press Brake Model PE 15.35	35 tonnes Bending Length 1.5m
1 off K & B Brake Press	50 Tonne
1 off Hydrashear Guillotine	8' x 1/4"
1 off Edwards Guillotine	1250mm x 3.25m
1 off Turner Power Press	30 Tonne
1 off Amada CS220 Notching Machine	
7 off Various Fly Presses Nos 1 to 6	
1 off Smart and Brown Toggle Press	
1 off Mackey Bowley Hydraulic Press	



Welding Section

- 1 off Feronius Magicwave 2600
- 1 off Maxi Compact 300 MIG
- 1 off NCB 275 CO2 Welder MIG
- 1 off Maxi Compact 300 MIG
- 2 off Miller 300 amp Argon Arc TIG
- 1 off Rentweld Portable Arc Welder
- 1 off Aristotig 200 Portable Welder
- 1 off Murix Sabre Arc 35i Plasma Cutter
- 1 off Sureweld Spot Welder - 50 kVA
- 1 off British Federal Spot Welder 63 kVA



DRILLING SECTION

Drills Multi

- 2 off Brown & Sharpe - 6 spindle (turret)
- 2 off Meddings - 4 spindle

Capacity

- 1/2"
- 1/2"

Drills Pedestal

- 1 off Pacera
- 1 off Servian
- 1 off Webo Rapid (high speed)
- 1 off Pollard (high speed)

- 1/2"
- 1/2"
- 1/4"
- 1/4"

Drills Bench

- 1 off Meddings
- 1 off Herbert (high speed)
- 1 off Corona (high speed)

- 3/4"
- 5/32"
- 5/32"

Tapping Machines

- 1 off Microtap II
- 1 off Microtap (Bench) Megatap 90
- 3 off Oldark (Bench)
- 1 off Essex (pedestal)
- 1 off Micromatic

16mm

TOOLROOM

- 2 off Adcock and Shipley Bridgeport with digital readout
- 1 off Elliott Surface Grinder
- 1 off Jones and Shipman Surface Grinder
- 1 off Eagle Surface Grinder
- 1 off Camurri Swing Head
- 1 off Colchester Student Centre Lathe
- 1 off Startrite 3/4" Drill

MISCELLANEOUS PLANT

- 1 off Sterling BMS 280 Bandsaw.
- 1 off Excel OL261 Automatic Bandsaw
- 1 off S.A. 300 Britannia Saw Auto Feed
- 1 off Midsaw Minor Toolroom Saw
- 1 off Perris 300 Cut Off Machine
- 1 off Startrite Metora Circular Cut Off Machine
- 1 off Abrasive Cut Off Machine
- 1 off Oetema Vibro Mill
- 2 off Almco Vibro Mill
- 1 off Guyson Sandblaster
- 1 off Delapena Honing Machine
- 1 off Wadkin Linisher and Disc Sander
- 1 off Arbor Press
- 1 off Arc Out Tap disintegrator
- 1 off Warco Milling & Drilling Machine



INSPECTION DEPARTMENT

- 1 off MSL Advantage 8106 CNC CMM. PH10T Probe Head with TP20 probe. Metrolog XG Level IV 3D Geometric CMM Software.

with

- 1 off DISC Talon co-ordinate measuring machine TAL0012

“Metrolog II Level 4” data processing software, full geometry measurement and construction including automatic CNC measurement. Axis range (600 x 600 x 450)

- 1 off Mitutoyo co-ordinate measuring machine MX504 with "Geopak" data processing system.

- 1 off Hilger and Watts Shadowgraph.
- 1 off Granite Surface Table 5' x 3'
- 2 off Surface Finish Measuring Equipment



We also have a comprehensive range of gauges and standard inspection equipment calibrated to comply with our B.S.I. registered to B.S. EN ISO 9001 : 2008 Registration No. FM27837



FM 27837